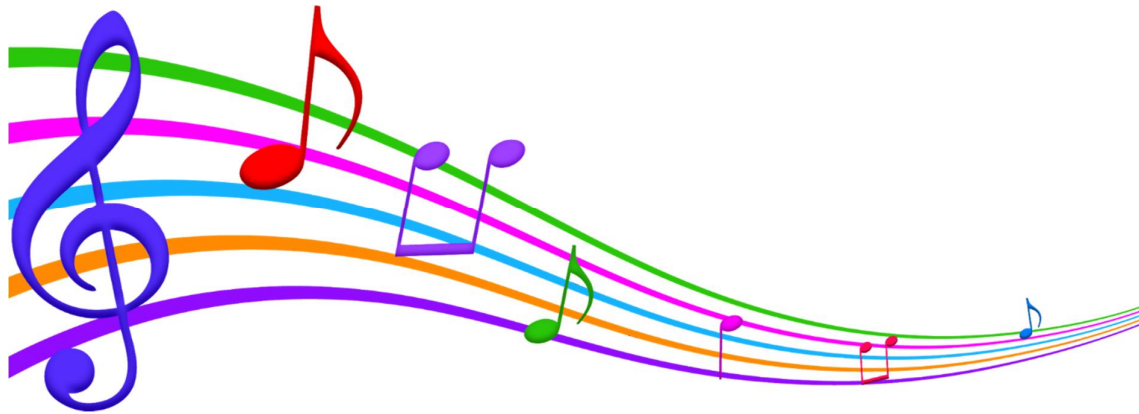


HILLVIEW COLLEGE



SCHEME OF WORK VISUAL & PERFORMING ARTS

TERM THREE

(APRIL 20^H - JULY 3RD 2020)

Sherry-Ann

Saunders

29114612



FORM TWO





HILLVIEW COLLEGE
SCHEME OF WORK
VISUAL AND PERFORMING ARTS
MUSIC
FORM TWO
TERM THREE (APRIL 20TH - JULY 3RD 2020)

At the end of term three, students should be able to:

- ✓ Define and Analyze a melody.
- ✓ Recognize, define and interpret time signature as simple duple, simple triple and simple quadruple.
- ✓ Compose rhythmic phrases in simple duple, simple triple and simple quadruple.
- ✓ Define what Enharmonic equivalent is.
- ✓ Define the Tonic Triad.
- ✓ Define what is an Interval.
- ✓ Learn the fingering of F sharp, C sharp and B flat on the recorder.
- ✓ Play songs (with F sharp, C sharp and B flat) on the recorder.
- ✓ Define a Scale and know the different ways it can be written.
- ✓ Write the Scales of G major, F major and D major on the staff or stave in both the Treble and Bass Clefs, ascending and descending.

✓ Play the scale of G major and F major on the recorder (Ascending and Descending)

✓ Define Key Signature.

✓ Know the notation of the East Indian Scale

- ❖ Sa
- ❖ Re
- ❖ Ga
- ❖ Ma
- ❖ Pa
- ❖ Dha
- ❖ Ni
- ❖ Sa

✓ Name and identify the families of musical instruments in a Symphony Orchestra.

- ❖ String
- ❖ Woodwind
- ❖ Brass
- ❖ Percussion
- ❖ Idiophones
- ❖ Membranophones
- ❖ Aerophones
- ❖ Chordophones
- ❖ Electrophones

✓ Identify instruments belonging to the different families of musical instruments.

Respectfully submitted by: Sherry-Ann Saunders.

